



GAT MONTHLY MEMBERSHIP PROGRESS REPORT

Results as of: 6/30/2024

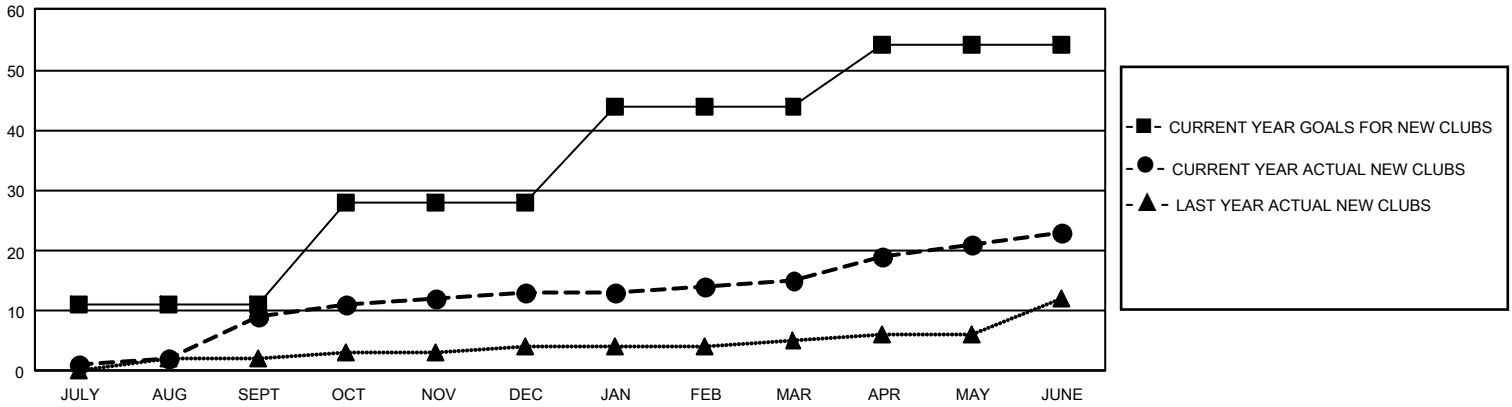
GMT Constitutional Area 1, Group A

REPORT DOES NOT INCLUDE CLUBS IN UNDISTRICTED AREAS.

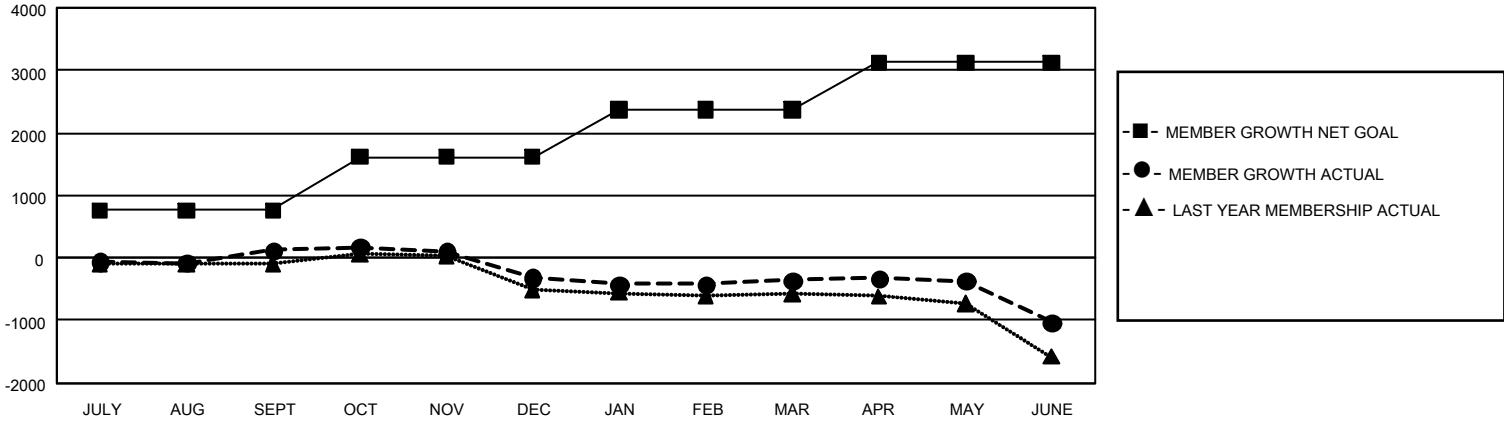
Clubs			
RESULTS FOR 2023-2024			
QUARTER	NEW CLUB GOAL	NEW CLUBS	DROPPED CLUBS
JULY/AUG/SEPT	33	9	11
OCT/NOV/DEC	51	4	16
JAN/FEB/MAR	48	2	4
APR/MAY/JUNE	30	8	20

Members			
RESULTS FOR 2023-2024			
QUARTER	MEMBER GROWTH NET GOAL	MEMBER GROWTH ACTUAL	DROPPED MEMBERS ACTUAL (including transfers)
JULY/AUG/SEPT	765	1,569	1,272
OCT/NOV/DEC	850	1,095	1,444
JAN/FEB/MAR	748	1,254	1,210
APR/MAY/JUNE	763	1,240	1,802

GOALS AND ACTUAL NEW CLUBS CUMULATIVE



GOALS AND ACTUAL MEMBERS CUMULATIVE



DROPPED CLUBS: 51	893 CLUBS OF 1,428 ADDED 1 OR MORE NEW MEMBERS	GENDER DISTRIBUTION	
		MALE 23,179 (63.17%) FEMALE 13,497 (36.78%) NON BINARY 5 (0.01%) PREFER NOT TO ANSWER 13 (0.04%)	
DROPPED MEMBERS		CLICK HERE FOR CUMULATIVE MEMBERSHIP DATA	
DECEASED 499 CLUB CANCELLED 249 OTHER 4,962 TOTAL 5,710	TOTAL FAMILY UNIT MEMBERS 5,928 FAMILY MEMBERS PAYING HALF DUES 3,042		